

# GL1#16-4

3586

3585

3584

3583

3582

NEW

3581

3580

3579

3578

3577

3576

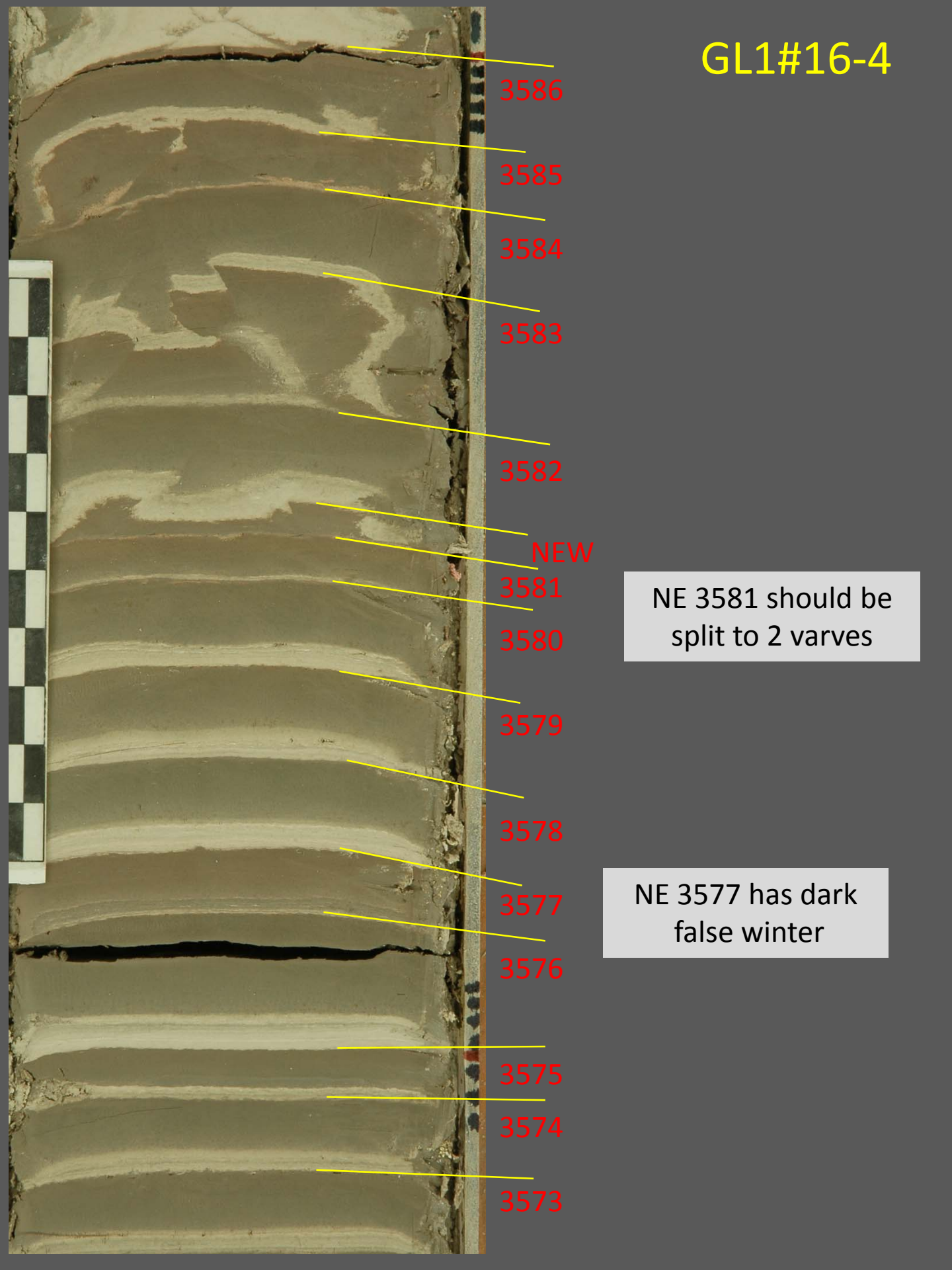
3575

3574

3573

NE 3581 should be split to 2 varves

NE 3577 has dark false winter



# GL2#17-10

3583

3582

NEW

3581

3580

3579

3578

3577

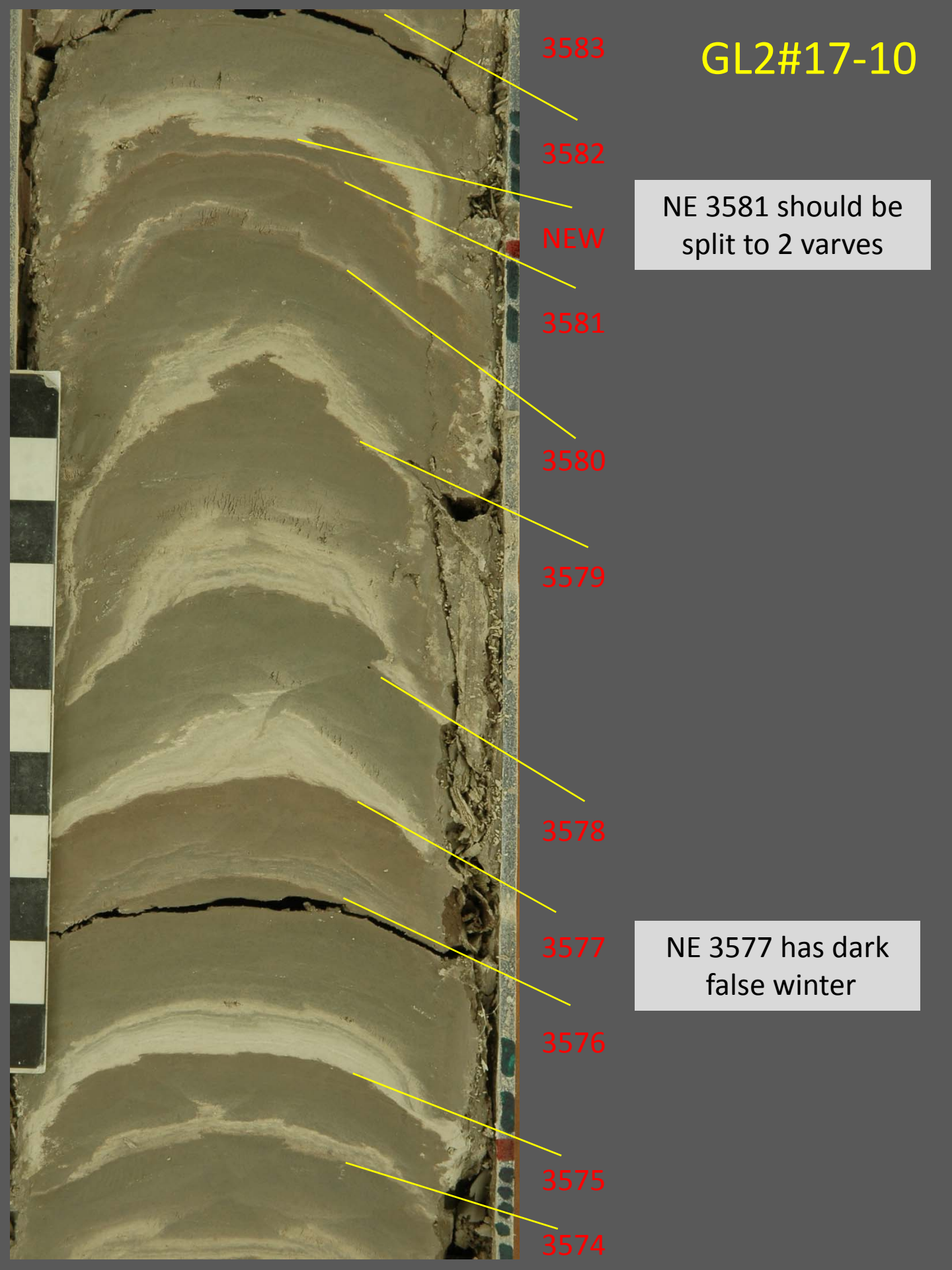
3576

3575

3574

NE 3581 should be split to 2 varves

NE 3577 has dark false winter



KFD#03-1

3585

3584

3583

3582

NEW  
3581

3580

NE 3581  
should be  
split to 2  
varves

3579

3578

3577

3576

NE 3577  
has dark  
false  
winter

3575

3574

3573

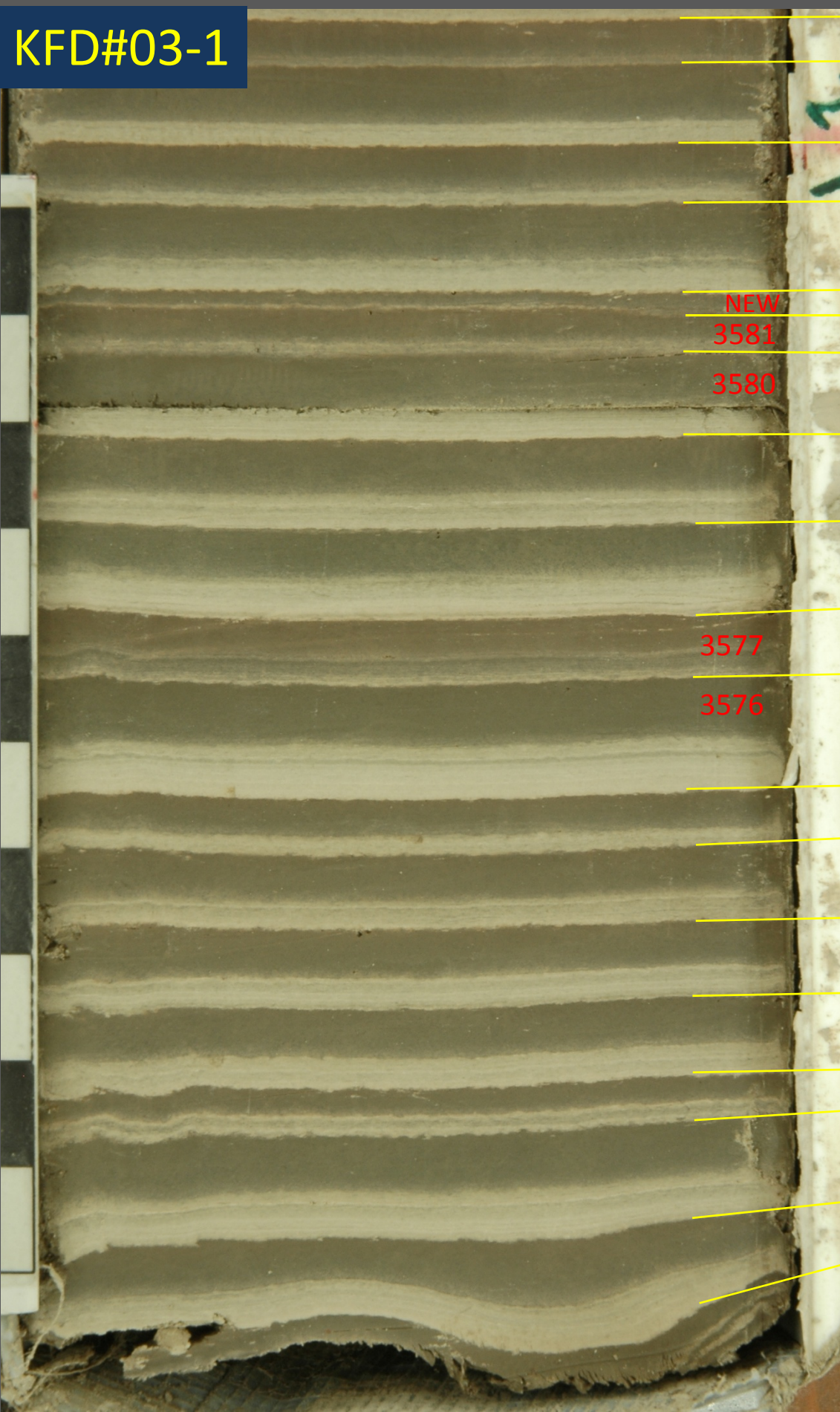
3572

3571

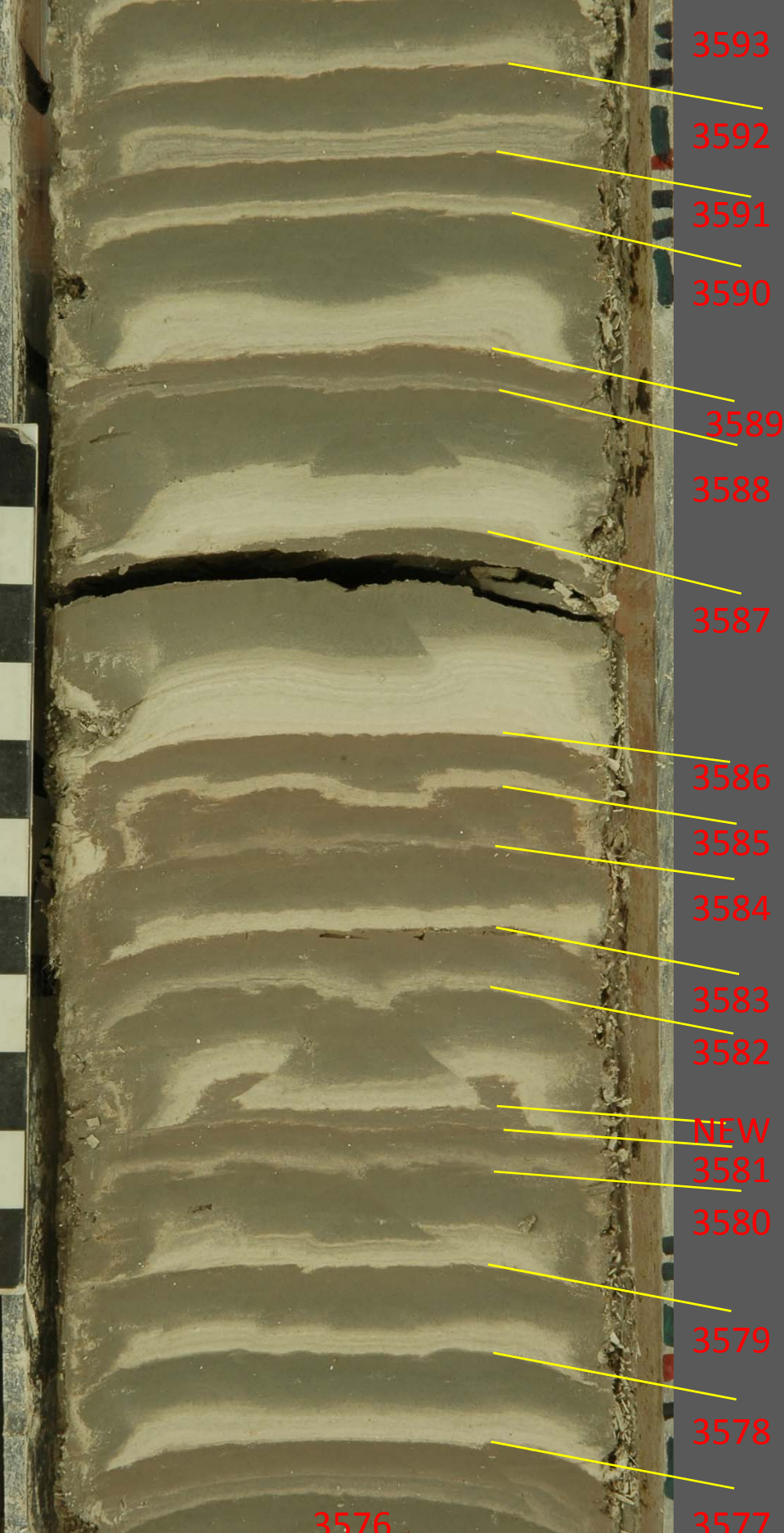
3570

3569

3568



# PET1#8-7



- 3593
- 3592
- 3591
- 3590
- 3589
- 3588
- 3587
- 3586
- 3585
- 3584
- 3583
- 3582
- NEW
- 3581
- 3580
- 3579
- 3578
- 3577

NE 3581 should be split to 2 varves

NE 3577 has dark false winter

3576

# SC1#11-1

3590

3589

3588

3587

NE 3577 has dark  
false winter

3586

3585

3584

3583

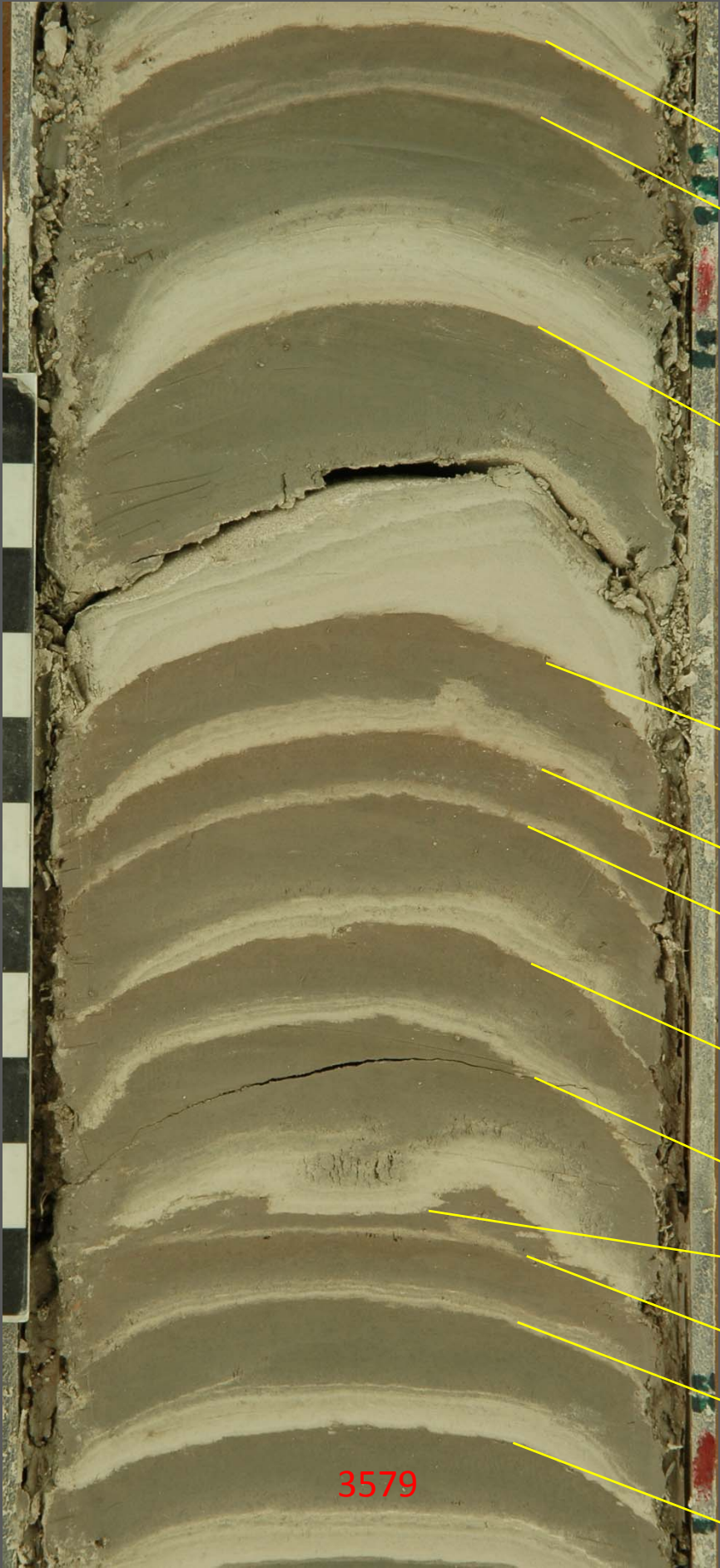
3582

NEW

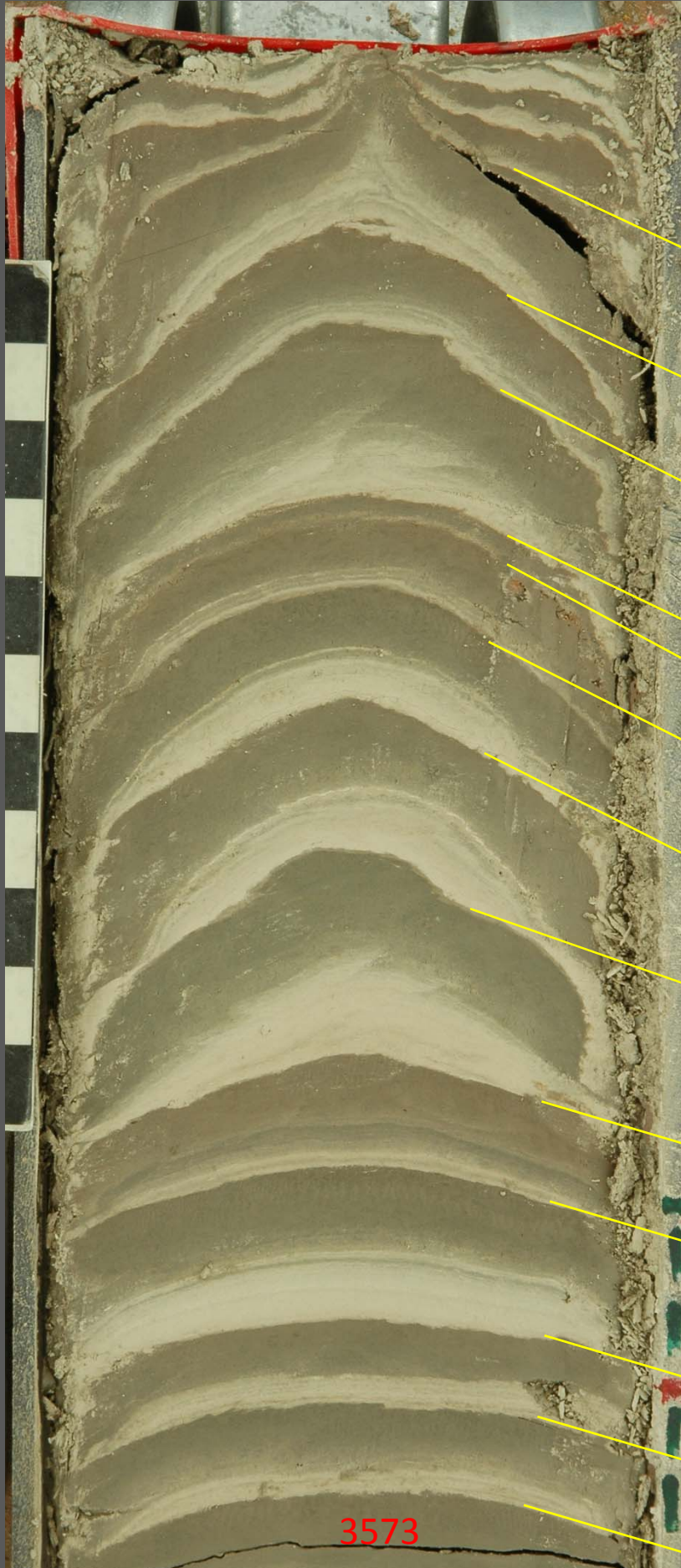
3581

3579

3580



# SC2#12-11



3584

3583

3582

NEW

3581

3580

3579

3578

3577

3576

3575

3574

3573

NE 3581 should be split to 2 varves

NE 3577 has dark false winter