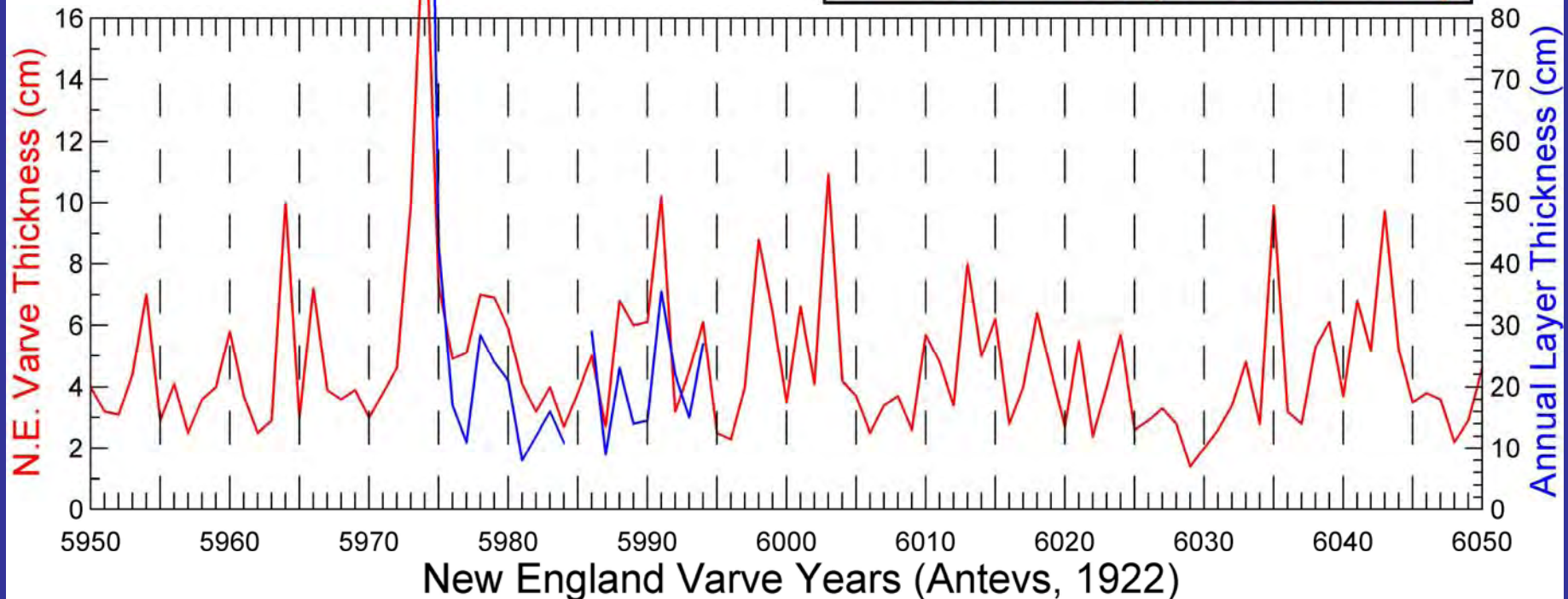


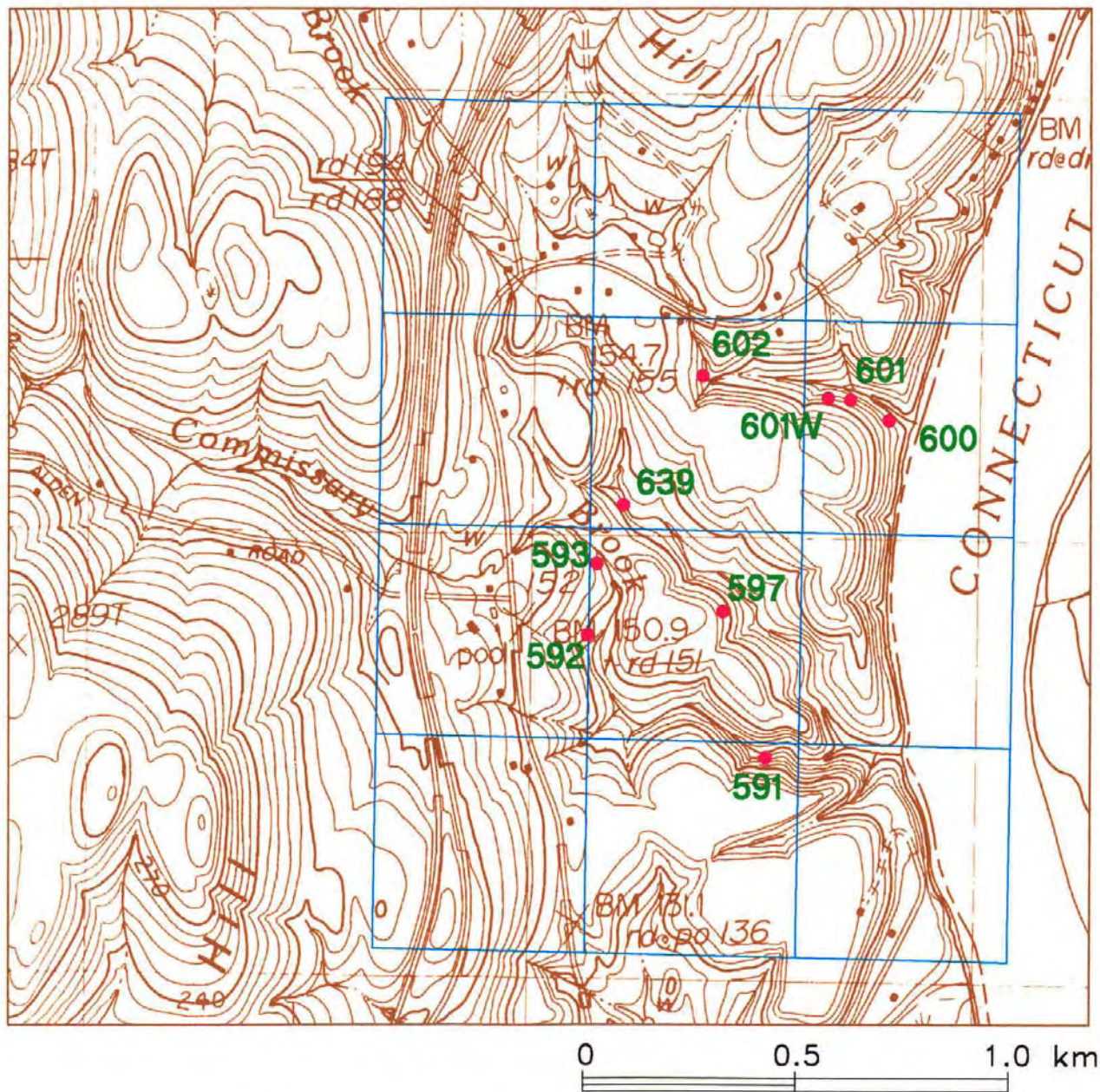
NE 5974
(basal varve)
is 190 cm.

Section rests
on till on a
rock ledge.

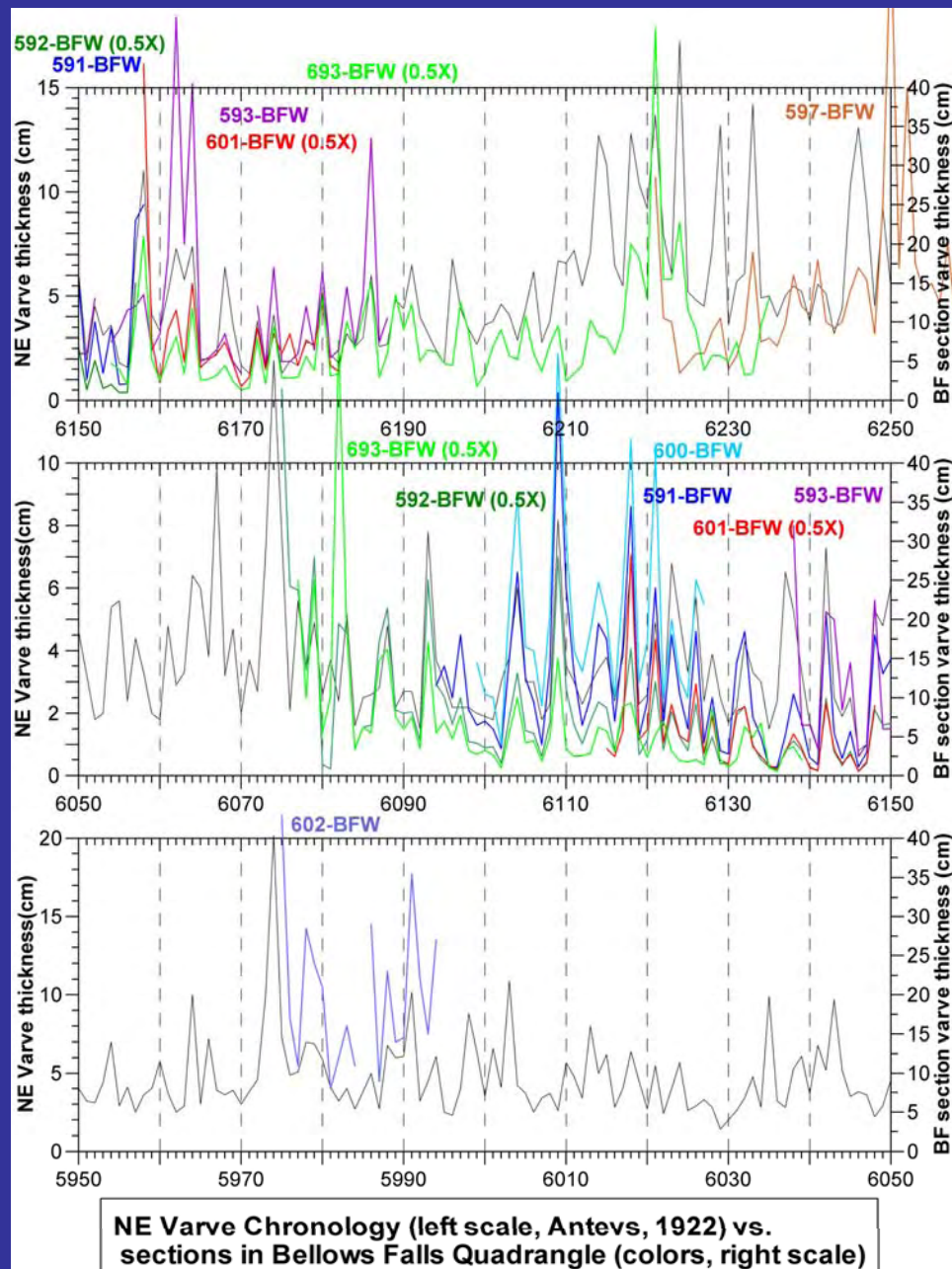
Section **602-BFW** vs.
NE 5950-6050 (Antevs, 1922)



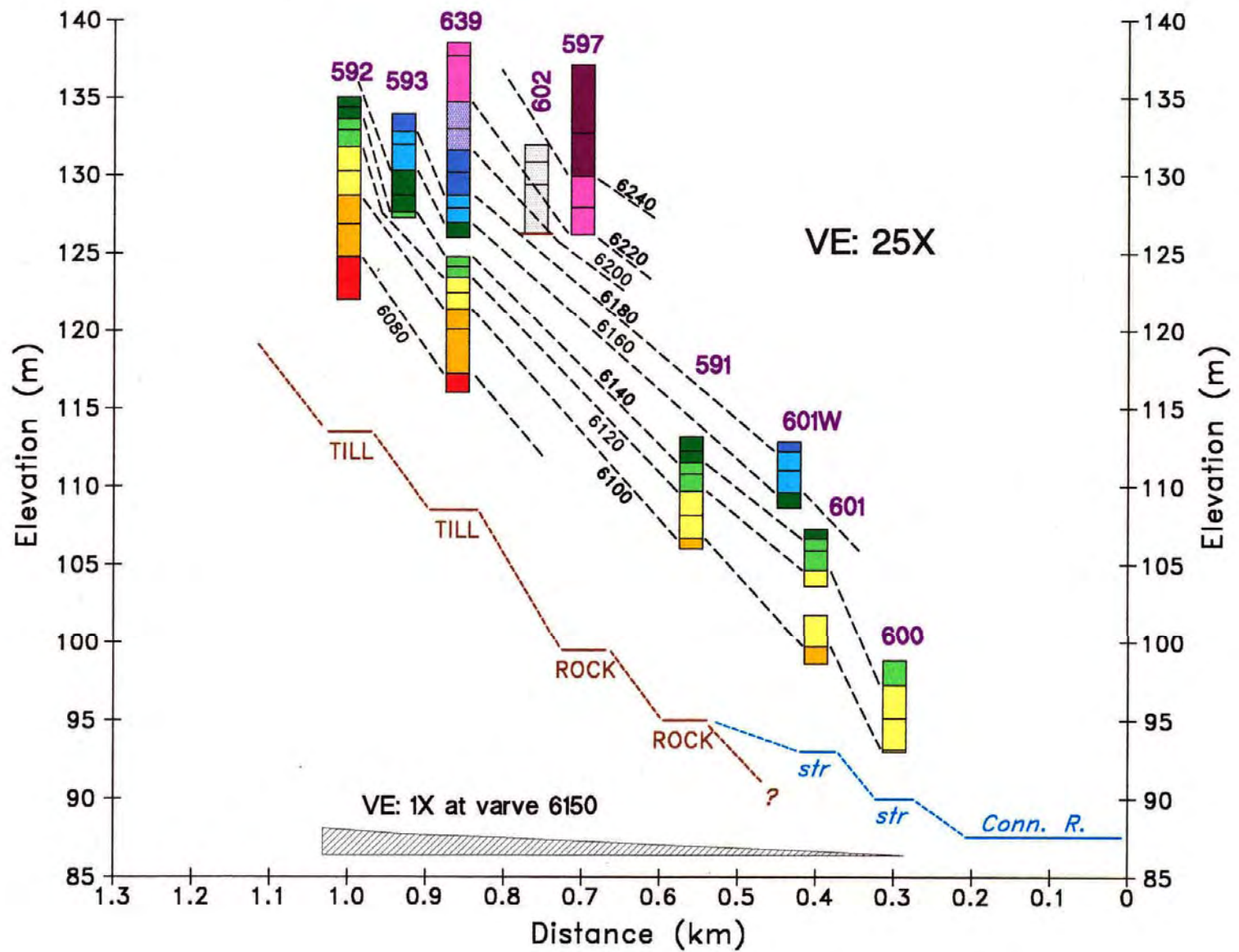
Site 602-BFW-N: Match of varve stratigraphy at section 602-BFW-N south of Hogan Hill with New England Varve Chronology of Antevs (1922).



Measured varve sections in the vicinity of Commissary and Little Commissary Brooks.



Match of varve sections in Commissary and Little Commissary Brook area with New England Varve Chronology of Antevs (1922).



Projected profile (parallel to horizontal grid lines on previous page) of Commissary and Little Commissary Brook area varve sections and stream bed geology. Colors indicate different 20-yr spans of the New England Varve Chronology. Section 602 is in the late 5900's and rests on till on a high bedrock promontory. The varve stratigraphy at 602 has not been included in the color scheme. The sections depict draping of the valley side by varves and also a generally thickening of varves toward the center of the valley.